



## East Lothian and Midlothian Public Protection Office Briefing

### Introduction

We are based at the Brunton Hall, Musselburgh and are currently co-located with the Police Scotland Public Protection Unit. The office was established in March 2014.

### Who we are:

Sean Byrne	Public Protection Team Manager	<a href="mailto:sbyrne1@eastlothian.gcsx.gov.uk">sbyrne1@eastlothian.gcsx.gov.uk</a>
Denice Lilley	Adult Support and Protection Lead Officer	<a href="mailto:dlilley@eastlothian.gcsx.gov.uk">dlilley@eastlothian.gcsx.gov.uk</a>
Leigh Taylor	Child Protection Lead Officer	<a href="mailto:ltaylor2@eastlothian.gcsx.gov.uk">ltaylor2@eastlothian.gcsx.gov.uk</a>
Veronica Campanile	Violence Against Women and Girls Co-ordinator	<a href="mailto:vcampanile@eastlothian.gcsx.gov.uk">vcampanile@eastlothian.gcsx.gov.uk</a>
Neil A Whettam	Public Protection Learning and Development Co-ordinator	<a href="mailto:nwhettam1@eastlothian.gcsx.gov.uk">nwhettam1@eastlothian.gcsx.gov.uk</a>
Mandy Rudden	MARAC (Multi-Agency Risk Assessment Conference) Co-ordinator	<a href="mailto:arudden@eastlothian.gcsx.gov.uk">arudden@eastlothian.gcsx.gov.uk</a>
Caroline Hall	Domestic Abuse Advisor	<a href="mailto:chall3@eastlothian.gcsx.gov.uk">chall3@eastlothian.gcsx.gov.uk</a>
Alison Porter	Domestic Abuse Advisor	<a href="mailto:aporter@eastlothian.gcsx.gov.uk">aporter@eastlothian.gcsx.gov.uk</a>
Lisa Dowie	Domestic Abuse Advisor	<a href="mailto:ldowie@eastlothian.gcsx.gov.uk">ldowie@eastlothian.gcsx.gov.uk</a>
Andrew Main	Senior Business Support Administrator	<a href="mailto:amain@eastlothian.gcsx.gov.uk">amain@eastlothian.gcsx.gov.uk</a>
Bernadette Stein	Business Support Administrator	<a href="mailto:bstein@eastlothian.gcsx.gov.uk">bstein@eastlothian.gcsx.gov.uk</a>

### What we do

We work on behalf of the East Lothian and Midlothian Public Protection Committee (EMPPC) to provide support and guidance to multi-agency teams. Leadership is provided by East Lothian and Midlothian Critical Services Oversight Group (CSOG) comprising Chief Executives and Chief Officers from Local Authorities, Police and Health.

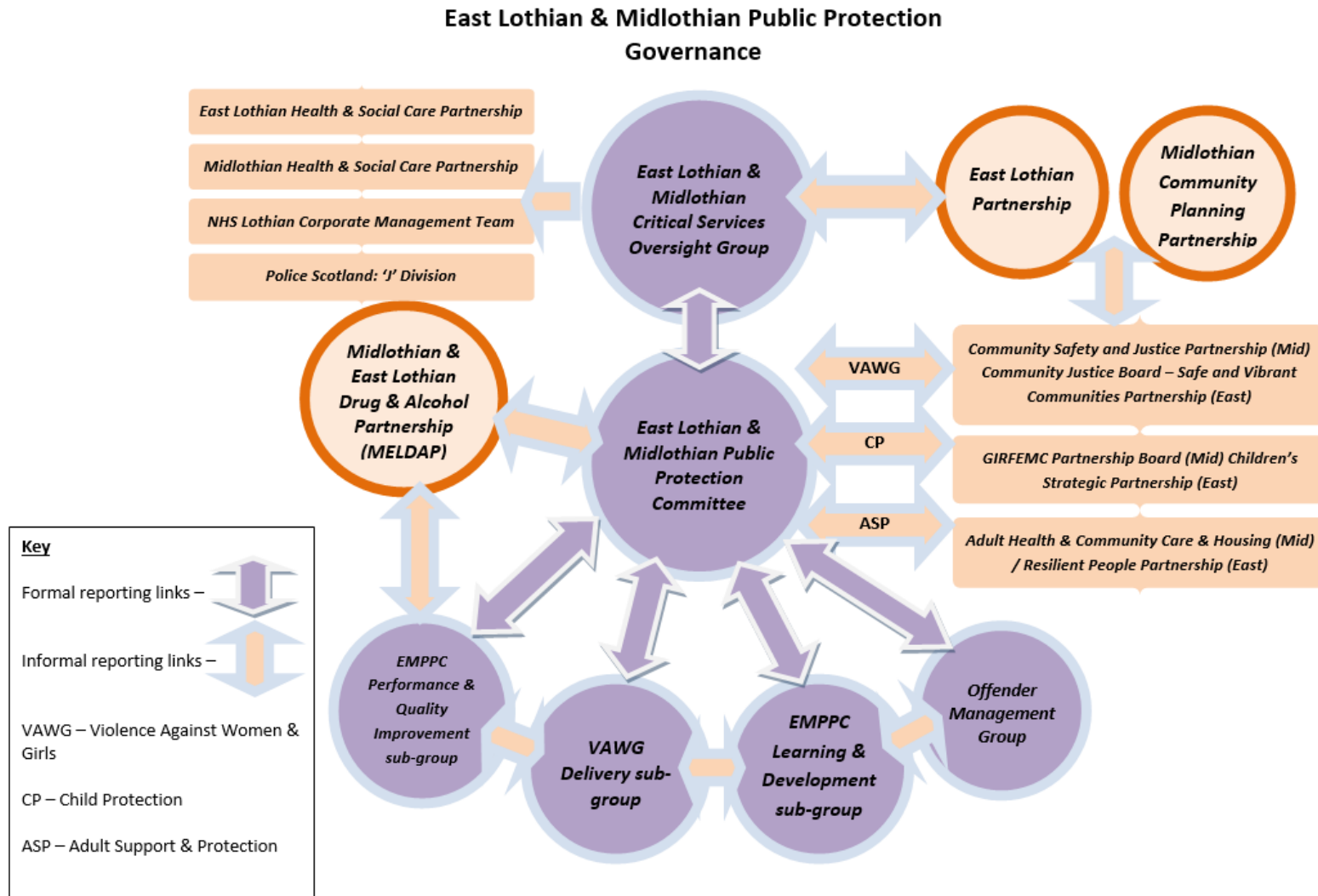
The role of the East Lothian and Midlothian Public Protection Office (EMPPO) is to deliver an independent and objective overview of all public protection focussed work including multi-agency learning and development. This is delivered via lead officers for child protection, adult support & protection and the violence against women co-ordinator. Our work is supported by the Public Protection learning and development officer.

### How we do it

We aim to support the delivery of operational and strategic objectives of the EMPPC to work towards improved outcomes and safety for both services users and professional teams. We are available for advice, support, guidance and consultation; please feel free to contact us!

Find out more and access key information at [www.emppc.org.uk](http://www.emppc.org.uk) / or call Tel 0131 653 5150

## Where we sit



## Why we do what we do

We support and service the groups in purple and are a partner to those in orange. We are the interface of public protection across agencies.